

LEGER

The Leger litter receptacle has a modern and durable design and is made entirely of a 2 mm thick perforated sheet. The inner metal rings allow you to place the trash bag inside without being visible to the public.

The Leger is ideally suited for urban as well as corporate environments. It is available in Cold Rolled Carbon Steel and stainless steel with electro-coating treatment as an option.

The Leger can also be used for easy identification of waste collection by providing colors and a legend for the type of waste to be disposed in each compartment.

NOMEN Design specializes in the design, development and production of urban and corporate furniture and equipment. Our site furnishings are created with a focus on design quality, and harmony with the environment.

MATERIALS

Cold Rolled Carbon Steel



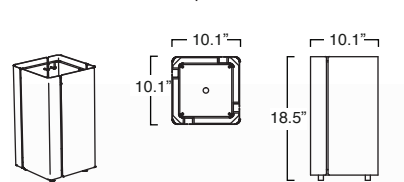
Custom colors available upon request

Stainless Steel

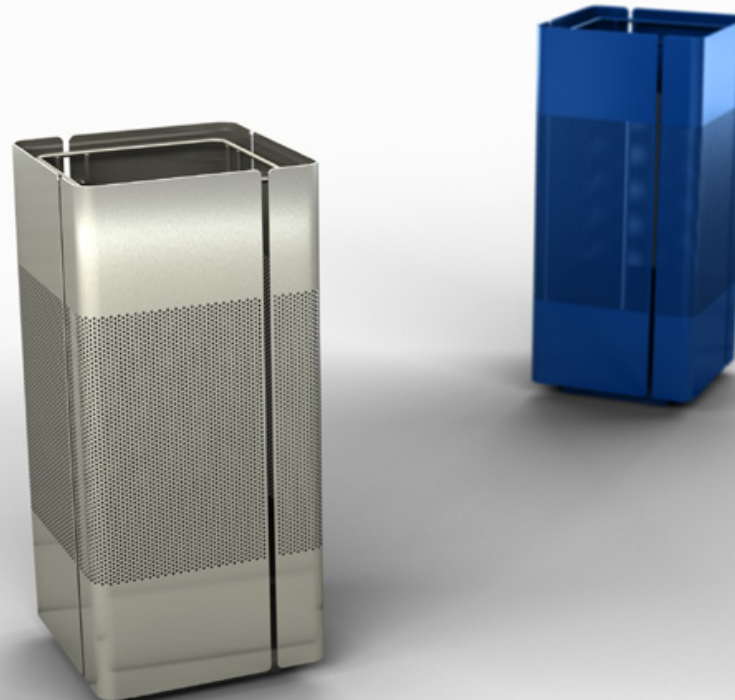
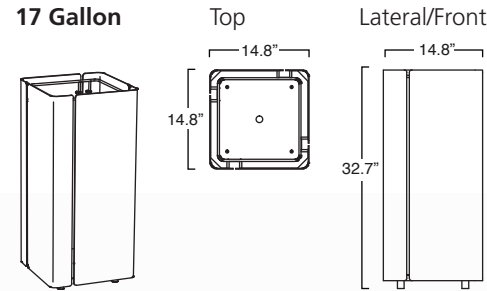


DIMENSIONS

3.4 Gallon



17 Gallon



SPECIFICATIONS

Litter receptacle available in 3.4 gallon and 17 gallon capacity.

MATERIALS

Optional cold rolled carbon steel or stainless steel ANSI 304.

FINISHES

Cold Rolled Carbon Steel:

Electro-coated with corrosion resistant epoxy and finished with a thermosetting polyester powder topcoat.

Stainless Steel ANSI 304:

Outer structural case and ground mounting plate available in a shot blasted finish.

MOUNTING

Surface mount attached with screws to threaded anchors installed in substrates, or freestanding on rubber pads.

WARRANTY

Products are warranted against defects in material or workmanship for three years from the date of shipment. The warranty does not apply to damage resulting from vandalism, neglect, accident, misuse, tampering, or modification.

PRICING

Pricing information available on www.nomendesign.com

NOMEN USA: 317.588.1182
SALES@NOMENDESIGN.COM
WWW.NOMENDESIGN.COM

